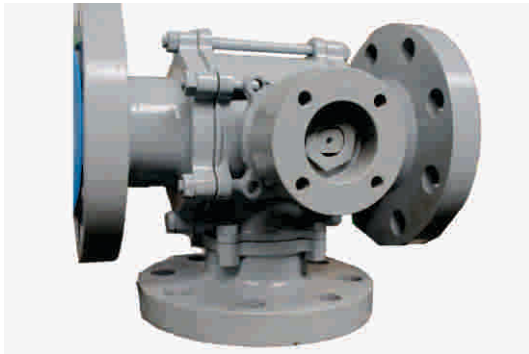


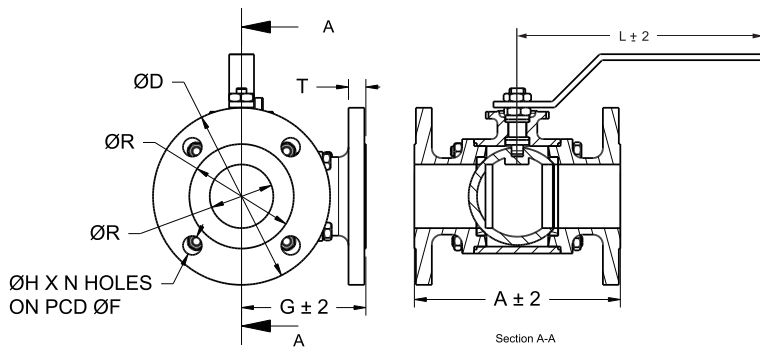
# Multiport Ball Valves

## 3 Way Ball Valve



Three Way (3 Way) Flange end L port diverter Ball Valves are designed and manufactured as per **BS5351 / ISO17292** standards. The materials of construction are **ASTM A216 Gr WCB (CS)**, **ASTM A351 Gr CF8 (SS304)** and **ASTM A351 Gr CF8M (SS316)**. Other materials such as **CF3**, **CF3M** can be supplied against specific requirement.

### Technical Specifications



Dimensions For Flanged End Class 150#

SIZE	A	ØB	ØD	ØR	G	PCD ØF	ØH X N	T	L
15FB	108	13	90	35	66	60.3	16 x 4	10	170
20FB	117	19	100	43	68	69.9	16 x 4	10.9	170
25FB	127	25	108	51	75	79.4	16 x 4	11.2	190
32FB	165	32	115	63.5	100	88.9	16 x 4	13.2	250
40FB	165	38	127	73	92	98.55	16 x 4	14.2	250
50FB	215	50	152	92.1	107	120.6	19 x 4	15.75	250
65FB	207	64	178	105	125	139.7	19 X 4	17.53	300
80FB	245	75	190.5	127	140	152.4	19 X 4	19.05	300
100FB	280	100	229	157	190	190.5	19 X 8	23.88	400
150FB	450	150	279	215.9	225	241.3	22.22 X 8	25.4	800
150FB	404	150	279	215.9	225	241.3	22.22 X 8	25.4	800
200FB	537	200	345	269.9	348	298.5	22.22 X 8	29	800

#### All dimensions are in mm

| Due to continuous improvements, dimensions are subject to change  
| Contact for other classes

NOTE: | G is distance from valve bore axis to third side face  
| T is the flange fitting thickness  
| Pressure equalisation line available as option

### Technical Data

PART NAME	MATERIAL
Body /Adapters	ASTM A216 Gr WCB ASTM A351Gr CF8 ASTM A351Gr CF8M
Ball /Stem	SS304/SS316
Seat /Body Seal	PTFE
Steam Seal /Gland Seal	PTFE / GFT
Locker Plate	CS
Operating Flange / Handle	CS
Studs / Bolts /Nuts/Gland Nut	CS
Gland	SS304



3-Way Ball Valve can also be supplied in Screwed End. Contact for dimension details.

#### L-port configuration



#### T-port configuration



T-port Ball Valve with 2 seats design is available

# Multiport Ball Valves

## 4 Way Ball Valve



4 Way Ball Valves are offered with L-L port and are manufactured in screwed end as well as flanged end.

## 6 Way Ball Valve



6 Way Ball Valve is designed for Duplex Filters to achieve smooth changeover between the filters. The Valves can be supplied in sizes from **0.5 inch** to **8 inch** full bore. The Material of Construction offered in this range of products is: **ASTM A216 Gr WCB** Body with **CF8/ SS304** Internals **ASTM A351 Gr CF8** Body with **CF8/ SS304** Internals **ASTM A351 Gr CF8M** Body with **CF8M/ SS316** Internals **Super Duplex SS** Body with **Super Duplex SS** Internals.

## 3 Way Double Ball Valve with Common Lever/ Actuator



Kavaata is market leader in **Double Three Way Transfer Valves**. These valves are manufactured by coupling two 'Three Way Ball Valves' together by a **flexible coupling**. One single handle is provided to operate the two valves simultaneously. These types of valves are specially used in **Duplex Heat Exchangers** and **Duplex Filters**.

### VALVE STANDARDS

Pressure Rating	ASA 150#/300#/PN10/PN16
Design Standard	BS 5351/ISO17292
Testing Standard	BS 6755/API 598
Flange Dimension	ASME B 16.5